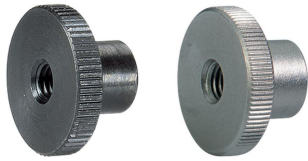


High Knurled Nuts (with Collar) • DIN 466 EH 24780.



Product Description

Material

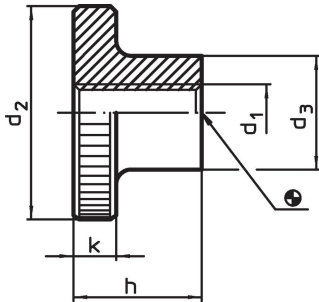
- Steel, blackened, quality 5
- Stainless steel 1.4301, dull blasted

More information


Notes

Knurling pitch and knurling depth may differ from DIN.

Drawing

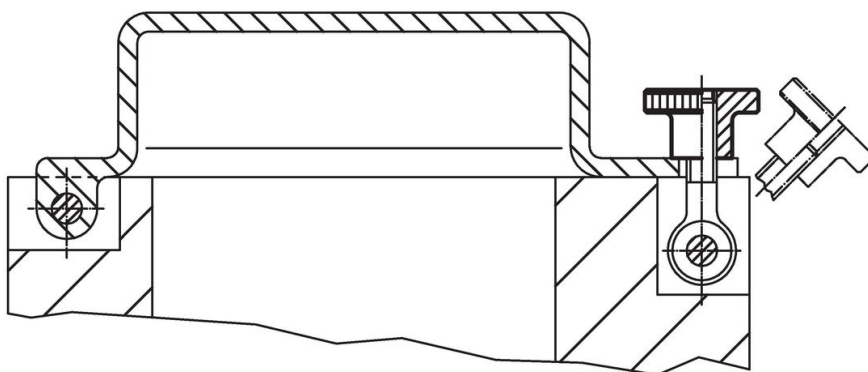


Order information

Dimensions						Art. No.
d ₁	d ₂	d ₃	h	k		
[mm]					[g]	
Steel						
M 3	12	6	7.5	2.5	2.9	24780.0030
M 4	16	8	9.5	3.5	6.7	24780.0040
M 5	20	10	11.5	4.0	12.0	24780.0050
M 6	24	12	15.0	5.0	23.0	24780.0060
M 8	30	16	18.0	6.0	44.0	24780.0080
M10	36	20	23.0	8.0	85.0	24780.0100
M12	40	22	25.0	10.0	119.0	24780.0120¹⁾
Stainless steel						
M 4	16	8	9.5	3.5	6.7	24780.0240
M 5	20	10	11.5	4.0	12.0	24780.0250
M 6	24	12	15.0	5.0	23.0	24780.0260
M 8	30	16	18.0	6.0	44.0	24780.0280
M10	36	20	23.0	8.0	85.0	24780.0300

¹⁾ DIN standards do not include these dimensions.

Application example



Compliance

For detailed compliance information please select the desired article number.