

Spring Plungers • double-sided
EH 22090.



Product Description

To be used for locating and securing, as well as electric connection.

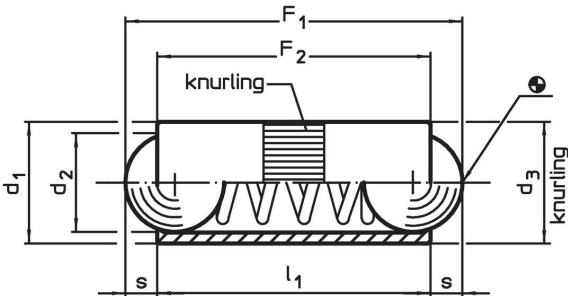
Material

- Body**
- Brass
- Ball**
- Stainless steel, hardened
- Spring**
- Stainless steel

More information

- Notes**
- Special types on request.
Spring plungers are specially tested for spring range and forces.
- References**
- Calculation of indexing resistance, please refer to appendix - Technical Data -

Drawing

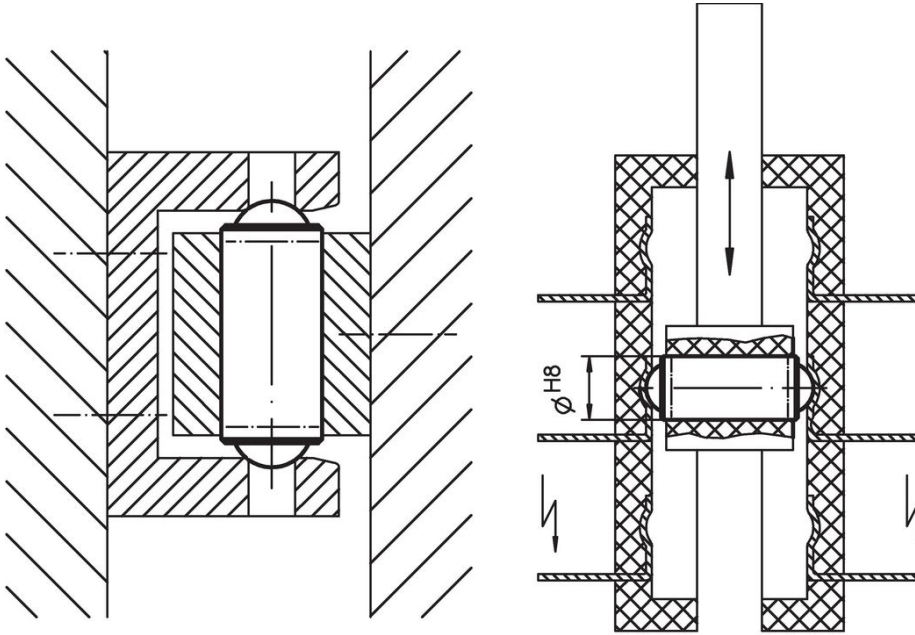


Order information

Dimensions				Stroke s	Spring load ¹⁾		max. [°C]	Location hole H8 [mm]	[g]	Art. No.
d ₁	d ₂	d ₃	l ₁		F ₁ ~ [N]	F ₂ ~ [N]				
[mm]				[mm]	[N]					
2.5	2.0	2.52	5.3	0.65	1.3	2.5	250	2.5	0.1	22090.0025
3.0	2.5	3.02	7.3	0.80	2.0	4.5	250	3.0	0.3	22090.0030
4.0	3.0	4.03	9.0	0.90	2.5	7.5	250	4.0	0.6	22090.0040
5.0	4.0	5.03	10.8	1.20	3.5	8.0	250	5.0	1.2	22090.0050
6.0	5.0	6.03	12.6	1.60	3.5	10.5	250	6.0	1.9	22090.0060
7.0	6.0	7.03	14.0	2.00	4.0	12.0	250	7.0	3.0	22090.0070
8.0	6.5	8.03	18.0	2.10	6.0	15.0	250	8.0	5.1	22090.0080

¹⁾ statistical average value

Application example



Compliance

For detailed compliance information please select the desired article number.