

Cylindrical Handles• rotating
EH 24530.

Product Description

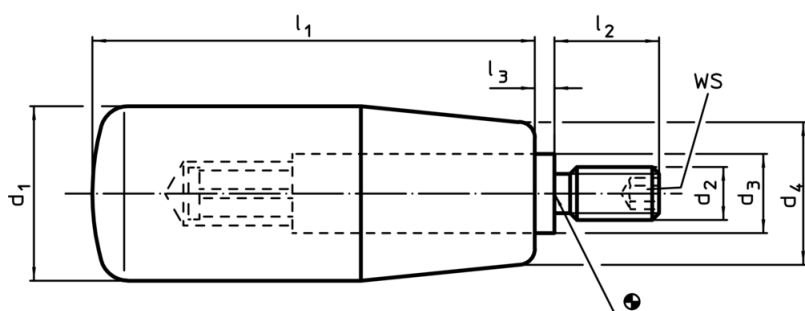


Material

- Axle part
- Steel, zinc-plated by galvanization
 - Stainless steel 1.4305

- Cylindrical handle
- Thermoplastic PA, black, dull
 - Thermosetting plastic PF 31, black

Drawing



Order information

| Dimensions | | | | | | | WS | max. [°C] | [g] | RoHS | REACH | Art. No. |
|----------------------|----------------|----------------|----------------|----------------|----------------|----------------|------|-----------|-----|----------------|----------------------------|------------|
| d ₁ | d ₂ | d ₃ | d ₄ | l ₁ | l ₂ | l ₃ | [mm] | [°C] | [g] | | | |
| Thermoplastic, steel | | | | | | | | | | | | |
| 14 | M 6 | 8 | 11 | 28 | 10 | 0.5 | 3 | 80 | 13 | RoHS-compliant | contains no SVHC materials | 24530.0008 |
| Thermoset, steel | | | | | | | | | | | | |
| 18 | M 6 | 10 | 15 | 40 | 12 | 2.5 | 3 | 110 | 29 | RoHS-compliant | contains no SVHC materials | 24530.0010 |
| 21 | M 6 | 10 | 17 | 50 | 13 | 2.5 | 3 | 110 | 42 | RoHS-compliant | contains no SVHC materials | 24530.0020 |
| 21 | M 8 | 10 | 17 | 50 | 13 | 2.5 | 4 | 110 | 43 | RoHS-compliant | contains no SVHC materials | 24530.0021 |
| 22 | M 6 | 10 | 18 | 56 | 13 | 2.5 | 3 | 110 | 47 | RoHS-compliant | contains no SVHC materials | 24530.0030 |
| 22 | M 8 | 10 | 18 | 56 | 13 | 2.5 | 4 | 110 | 48 | RoHS-compliant | contains no SVHC materials | 24530.0031 |
| 23 | M 8 | 13 | 19 | 65 | 14 | 2.5 | 4 | 110 | 79 | RoHS-compliant | contains no SVHC materials | 24530.0040 |
| 23 | M10 | 13 | 19 | 65 | 14 | 2.5 | 5 | 110 | 80 | RoHS-compliant | contains no SVHC materials | 24530.0041 |
| 26 | M 8 | 13 | 21 | 80 | 16 | 2.5 | 4 | 110 | 106 | RoHS-compliant | contains no SVHC materials | 24530.0050 |
| 26 | M10 | 13 | 21 | 80 | 16 | 2.5 | 5 | 110 | 108 | RoHS-compliant | contains no SVHC materials | 24530.0051 |
| 28 | M10 | 13 | 22 | 90 | 16 | 2.5 | 5 | 110 | 126 | RoHS-compliant | contains no SVHC materials | 24530.0060 |
| 31 | M12 | 14 | 25 | 102 | 20 | 2.5 | 6 | 110 | 178 | RoHS-compliant | contains no SVHC materials | 24530.0071 |

| Dimensions | | | | | | | WS [mm] | max. [°C] | [g] | RoHS | REACH | Art. No. |
|----------------------------|----------------|----------------|------------------------|----------------|----------------|----------------|------------|--------------|-----|----------------|----------------------------|------------|
| d ₁ | d ₂ | d ₃ | d ₄ [mm] | l ₁ | l ₂ | l ₃ | | | | | | |
| Thermoset, stainless steel | | | | | | | | | | | | |
| 18 | M 6 | 10 | 15 | 40 | 12 | 2.5 | 3 | 110 | 29 | RoHS-compliant | contains no SVHC materials | 24530.0210 |
| 21 | M 6 | 10 | 17 | 50 | 13 | 2.5 | 3 | 110 | 42 | RoHS-compliant | contains no SVHC materials | 24530.0220 |
| 23 | M 8 | 13 | 19 | 65 | 14 | 2.5 | 4 | 110 | 79 | RoHS-compliant | contains no SVHC materials | 24530.0240 |
| 26 | M10 | 13 | 21 | 80 | 16 | 2.5 | 5 | 110 | 108 | RoHS-compliant | contains no SVHC materials | 24530.0251 |
| 28 | M10 | 13 | 22 | 90 | 16 | 2.5 | 5 | 110 | 126 | RoHS-compliant | contains no SVHC materials | 24530.0260 |
| 31 | M12 | 14 | 25 | 102 | 20 | 2.5 | 6 | 110 | 178 | RoHS-compliant | contains no SVHC materials | 24530.0271 |

Application example

