

## Adjustable Clamping Levers • with axial bearing, with female thread

### EH 24420.



#### Product Description

Adjustable clamping levers find versatile applications when the area of use is confined or a specific lever position is required.

Advantages of axial bearing:

- Double clamping force with same lever size, by reducing the surface friction.
- Protection of workpiece by a fixed locating surface.
- Little setting due to higher pre-clamping force of bolt, e.g. thread.

#### Material

##### Lever

- Zinc die-cast, plastic coated, orange similar to RAL 2004, matt structure
- Zinc die-cast, plastic coated, black, similar to RAL 9005, matt structure

##### Threaded part

- Steel, nitrided, blackened

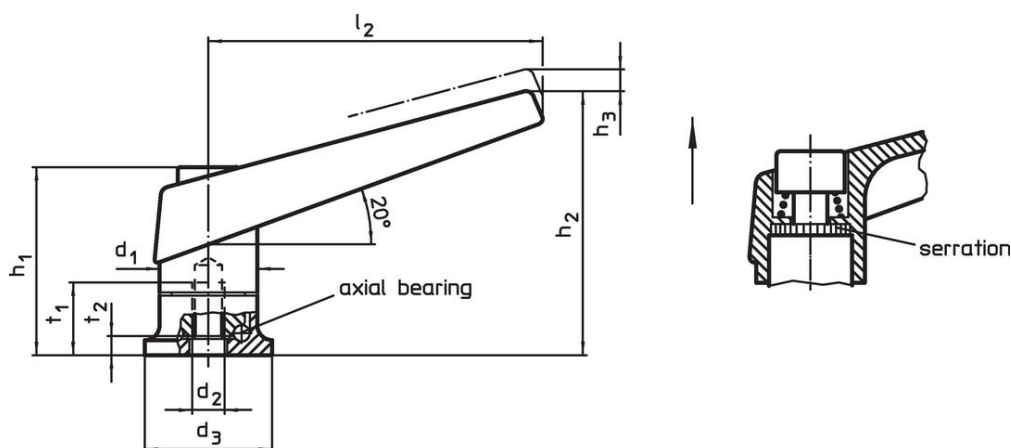
##### Inner parts

- Steel, nitrided, blackened

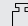
#### Operation

**By lifting the lever** the serrations are disengaged. The lever can be positioned by the serrations. On releasing the lever, the serrations are automatically re-engaged.

#### Drawing

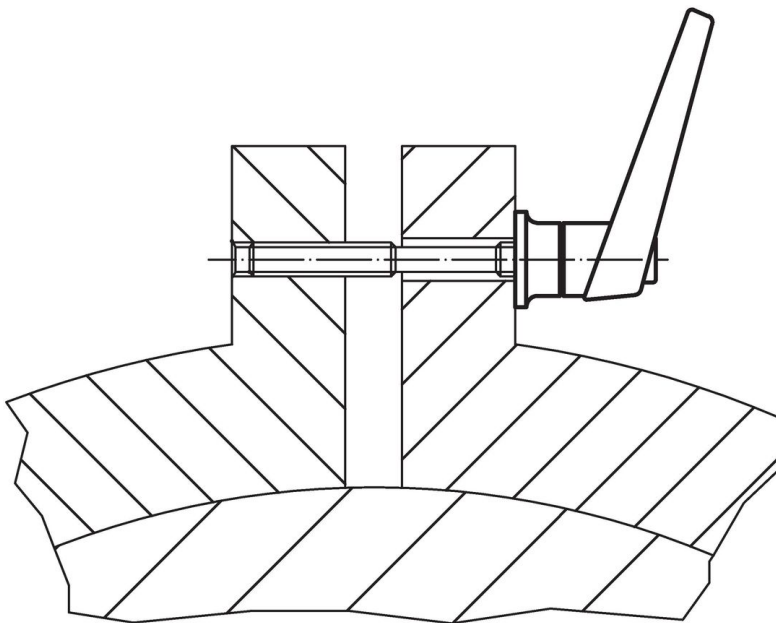
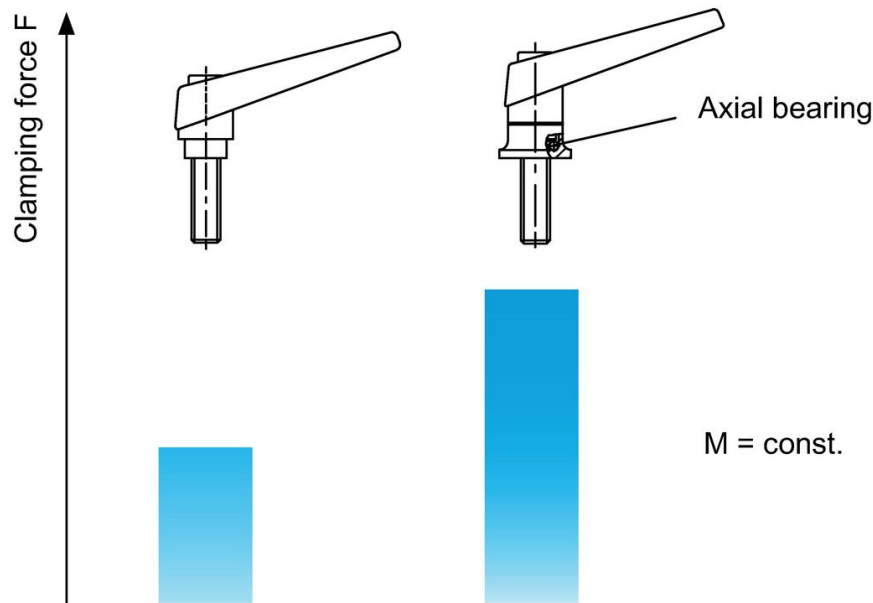


#### Order information

Dimensions										Art. No.
d <sub>1</sub>	d <sub>2</sub>	d <sub>3</sub>	h <sub>1</sub>	h <sub>2</sub>	h <sub>3</sub>	l <sub>2</sub>	t <sub>1</sub> min.	t <sub>2</sub>		
[mm]									[g]	
orange										
18	M 6	24	34.5	50	3.0	62	12.5	5.0	91	<a href="#">24420.0010</a>
22	M 8	25	39.5	56	3.5	74	14.0	4.2	138	<a href="#">24420.0110</a>
25	M10	30	46.5	66	4.0	89	18.0	5.4	205	<a href="#">24420.0210</a>
30	M12	35	56.5	82	5.0	108	26.5	6.6	358	<a href="#">24420.0310</a>
black										
18	M 6	24	34.5	50	3.0	62	12.5	5.0	91	<a href="#">24420.0012</a>
22	M 8	25	39.5	56	3.5	74	14.0	4.2	138	<a href="#">24420.0112</a>
25	M10	30	46.5	66	4.0	89	18.0	5.4	205	<a href="#">24420.0212</a>
30	M12	35	56.5	82	5.0	108	26.5	6.6	358	<a href="#">24420.0312</a>

### Application example

Increase of clamping force with axial bearing  
(while manual force is unchanged)



### Compliance

For detailed compliance information please select the desired article number.