

Tubular Handles • front mounting

EH 24321.



Product Description

Tubular handles are used, for example, on machine doors. These tubular handles made of aluminium are characterised by their ergonomic and robust construction and modern design. This version is equipped with angled handle legs (legs).

Material

Cap

- Plastic, light grey

Handle

- Aluminium, anodised
- Aluminium, plastic coated, similar to RAL 9005 black, matt structure

Covering

- Plastic, light grey
- Plastic, black

Assembly

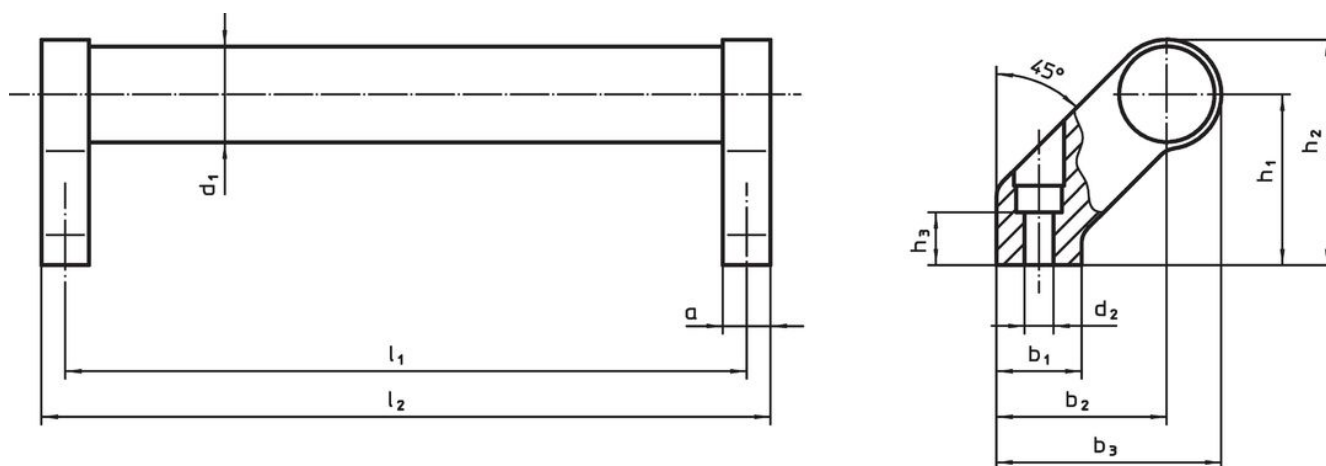
The handles can be mounted to the component from the front (operating side) using cylinder screws. The hole is closed with a plastic covering.

More information

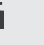
Notes

Special types on request.

Drawing



Order information

Dimensions												Art. No.
d ₁	l ₁ ±0.25	a	b ₁	b ₂	b ₃	d ₂	h ₁	h ₂	h ₃ min.	l ₂		
[mm]												
silver												
28	200	14	25	50	66	6.5	50	66	17	214	406	24321.0100
28	250	14	25	50	66	6.5	50	66	17	264	437	24321.0105
28	300	14	25	50	66	6.5	50	66	17	314	448	24321.0110
28	350	14	25	50	66	6.5	50	66	17	364	493	24321.0115
28	400	14	25	50	66	6.5	50	66	17	414	520	24321.0120
28	500	14	25	50	66	6.5	50	66	17	514	556	24321.0125
28	600	14	25	50	66	6.5	50	66	17	614	631	24321.0130
black												
28	200	14	25	50	66	6.5	50	66	17	214	406	24321.0600
28	250	14	25	50	66	6.5	50	66	17	264	437	24321.0605
28	300	14	25	50	66	6.5	50	66	17	314	448	24321.0610
28	350	14	25	50	66	6.5	50	66	17	364	493	24321.0615
28	400	14	25	50	66	6.5	50	66	17	414	520	24321.0620
28	500	14	25	50	66	6.5	50	66	17	514	556	24321.0625
28	600	14	25	50	66	6.5	50	66	17	614	631	24321.0630

Compliance

RoHS compliant

Contains lead - compliant according to exceptions 6a / 6b / 6c.

Contains SVHC substances >0,1% w/w

Contains lead - SVHC list [REACH] as of 23.01.2024.

Contains Proposition 65 substances



Lead can cause cancer and reproductive harm from exposure
<https://www.P65Warnings.ca.gov/>

Free from Conflict Minerals

This product does not contain any substances designated as "conflict minerals" such as tantalum, tin, gold or tungsten from the Democratic Republic of Congo or adjacent countries.