

Base Elements• for location hole
EH 23700.

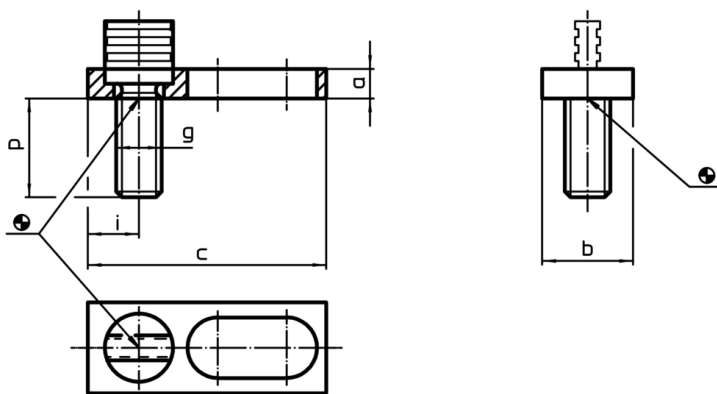


Product Description

Material

- Body
- Steel, blackened
- Wearing parts
- Heat-treated steel
- Pull-rod
- Special steel

Drawing



Order information

a	b	c	Dimensions g			📦 [g]	RoHS	REACH	Art. No.
			[mm]						
8	25	65	M12	12.5	27	95	RoHS-compliant	contains no SVHC materials	23700.0712
12	30	78	M16	14.0	33	190	RoHS-compliant	contains no SVHC materials	23700.0716

Application example

