

Fulcrum Pins EH 23400.



Product Description

Material

Fulcrum Pins
• Stainless steel 1.4021, heat-treated

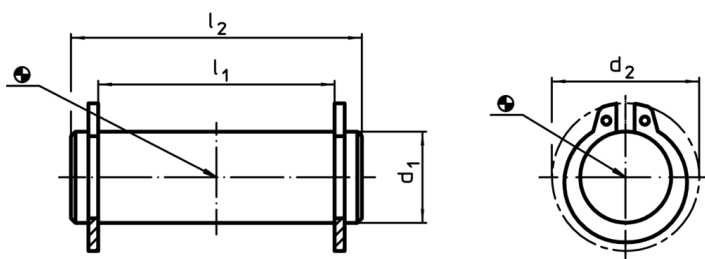
Safety ring
• Stainless steel 1.4310

More information

References

Suitable for eccentric levers EH 23390. and similar applications.

Drawing



Order information

d ₁ f8	l ₁ -0.5	Dimensions		[g]	RoHS	REACH	Art. No.
		d ₂	l ₂				
		[mm]					
8	14	14.7	18	7.7	RoHS-compliant	contains no SVHC materials	23400.0082
8	21	14.7	27	10.0	RoHS-compliant	contains no SVHC materials	23400.0085
10	18	17.0	24	14.0	RoHS-compliant	contains no SVHC materials	23400.0102
10	29	17.0	35	21.0	RoHS-compliant	contains no SVHC materials	23400.0105
12	21	19.0	27	23.0	RoHS-compliant	contains no SVHC materials	23400.0122
12	31	19.0	37	34.0	RoHS-compliant	contains no SVHC materials	23400.0125

Application example

