

Down-Thrust Clamps• swivelling, size 40 EH 23310.



Product Description

Universal mechanical clamping element for fast and comfortable changing and clamping of workpieces by means of manually swivelling clamping claw.

The clamps provide the following advantages:

- Rapid manual clamping by means of the clamping screw, the adjustable clamping lever, or the double eccentric clamping lever.
- Easier and quicker workpiece change by swinging the clamping claw to the left or right. Continuously variable setting by means of positioning ring 23310.0350
- The use of positioning ring 23310.0350 allows a repeatable precise clamping. Here h_1 min. increases by at least 7 mm (stroke minus 7 mm).
- Compact design, therefore less space requirement when clamping.
- Easily adjustable even to large clamping heights, using the height adjusting cylinders.

Material

- Case-hardened steel, case-hardened, blackened and ground

Assembly

Down-thrust clamps can be attached in two ways:

1. in a T-slot, using a nut for T-slots DIN 508 (EH 23010.)
2. with the set screw directly in the mounting plate of, for example, a fixture

The cylinder must make contact over the whole surface.

Exceeding of the clamping height is inhibited by the height limitation.

More information

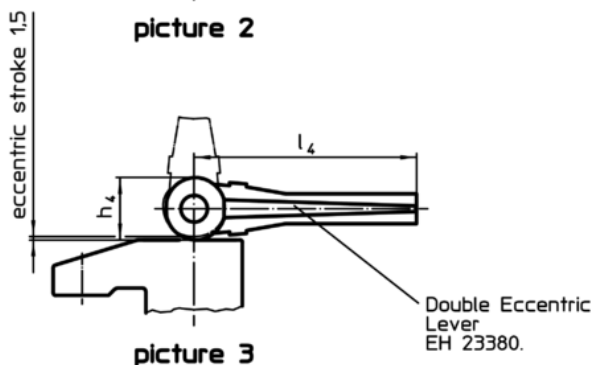
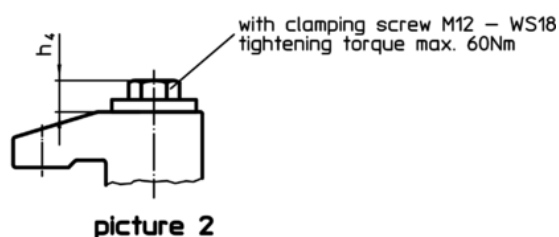
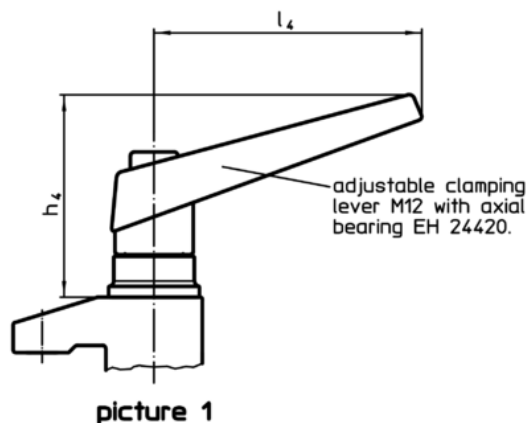
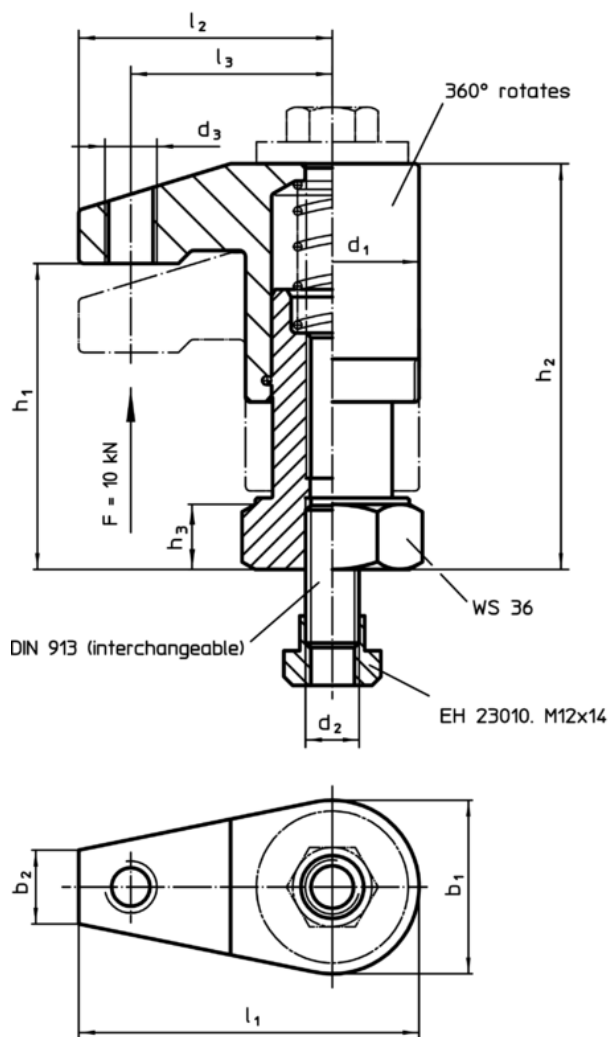
References

The clamping height can be increased by using height adjusting cylinders EH 23310. and disks EH 1107. and EH 1108. It can be reduced by employing clamping inserts, e.g. EH 22730.

Further products


- Positioning Rings, for down-thrust clamp
- Height Adjusting Cylinders
- Spacers
- Wrenches

Drawing



Order information

Dimensions														Stroke	[g]	RoHS	REACH	Art. No.
d ₁	b ₁	b ₂	d ₂	d ₃	h ₁	h ₂	h ₃	h ₄	l ₁	l ₂	l ₃	l ₄	[mm]					
with adjustable clamping lever with axial bearing – picture 1																		
40	40	17	M12	M12	50 – 70	73 – 93	15	82	75	55	43	108	20	1194	RoHS-compliant	contains SVHC materials >0.1% w/w	23310.0050	
40	40	17	M12	M12	68 – 98	91 – 121	15	82	75	55	43	108	30	1359	RoHS-compliant	contains SVHC materials >0.1% w/w	23310.0053	
40	40	17	M12	M12	95 – 135	118 – 158	22	82	75	55	43	108	40	1639	RoHS-compliant	contains SVHC materials >0.1% w/w	23310.0056	
with clamping screw – picture 2																		
40	40	17	M12	M12	50 – 70	73 – 93	15	13	75	55	43	–	20	876	RoHS-compliant	contains SVHC materials >0.1% w/w	23310.0051	
40	40	17	M12	M12	68 – 98	91 – 121	15	13	75	55	43	–	30	964	RoHS-compliant	contains SVHC materials >0.1% w/w	23310.0054	
40	40	17	M12	M12	95 – 135	118 – 158	22	13	75	55	43	–	40	1300	RoHS-compliant	contains SVHC materials >0.1% w/w	23310.0057	

Dimensions													Stroke [mm]		RoHS	REACH	Art. No.
d ₁	b ₁	b ₂	d ₂	d ₃	h ₁	h ₂	h ₃	h ₄	l ₁	l ₂	l ₃	l ₄					
with eccentric clamping lever – picture 3																	
40	40	17	M12	M12	50 – 70	73 – 93	15	28	75	55	43	100	20	1213	RoHS-compliant	contains SVHC materials >0.1% w/w	23310.0052
40	40	17	M12	M12	68 – 98	91 – 121	15	28	75	55	43	100	30	1370	RoHS-compliant	contains SVHC materials >0.1% w/w	23310.0055
40	40	17	M12	M12	95 – 135	118 – 158	22	28	75	55	43	100	40	1585	RoHS-compliant	contains SVHC materials >0.1% w/w	23310.0058

Application example

