

Stops EH 23281.



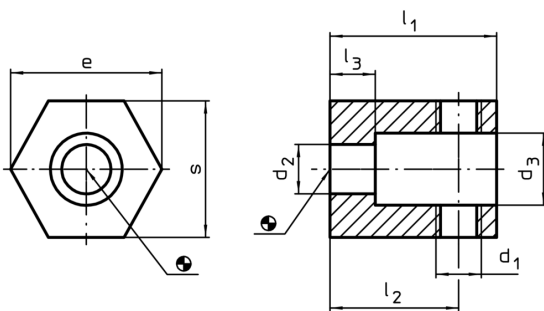
Product Description

With the stop a flexible stop for a workpiece can be realised. Together with a grub screw (e.g. EH 22540.), a workpiece can be mounted and aligned. The grub screw should be secured in position with a hexagon nut. Suitable for clamping devices M 20 - M 24.

Material

- Steel, blackened

Drawing



Order information

Dimensions								[g]	RoHS	REACH	Art. No.
d ₁	d ₂	d ₃	l ₁	l ₂	l ₃	s	e				
M20	26	38	85	60	20	65	70	1660	RoHS-compliant	contains no SVHC materials	23281.0024

Application example

