

## Down-Thrust Clamps• swivelling, size 40

23310.0053



## Product Description

Universal mechanical clamping element for fast and comfortable changing and clamping of workpieces by means of manually swivelling clamping claw.

The clamps provide the following advantages:

- Rapid manual clamping by means of the clamping screw, the adjustable clamping lever, or the double eccentric clamping lever.
- Easier and quicker workpiece change by swinging the clamping claw to the left or right. Continuously variable setting by means of positioning ring 23310.0350
- The use of positioning ring 23310.0350 allows a repeatable precise clamping. Here  $h_1$  min. increases by at least 7 mm (stroke minus 7 mm).
- Compact design, therefore less space requirement when clamping.
- Easily adjustable even to large clamping heights, using the height adjusting cylinders.

## Material

- Case-hardened steel, case-hardened, blackened and ground

## Assembly

Down-thrust clamps can be attached in two ways:

1. in a T-slot, using a nut for T-slots DIN 508 (EH 23010.)
2. with the set screw directly in the mounting plate of, for example, a fixture

The cylinder must make contact over the whole surface.

Exceeding of the clamping height is inhibited by the height limitation.

## More information

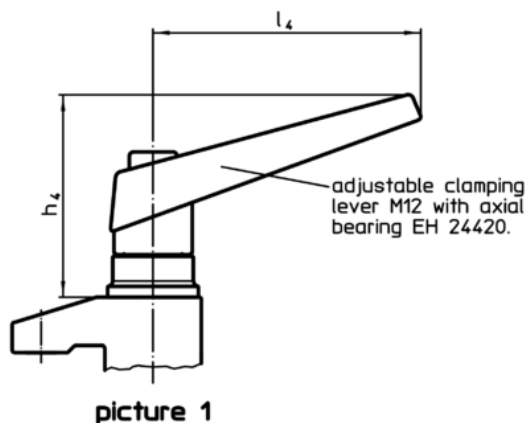
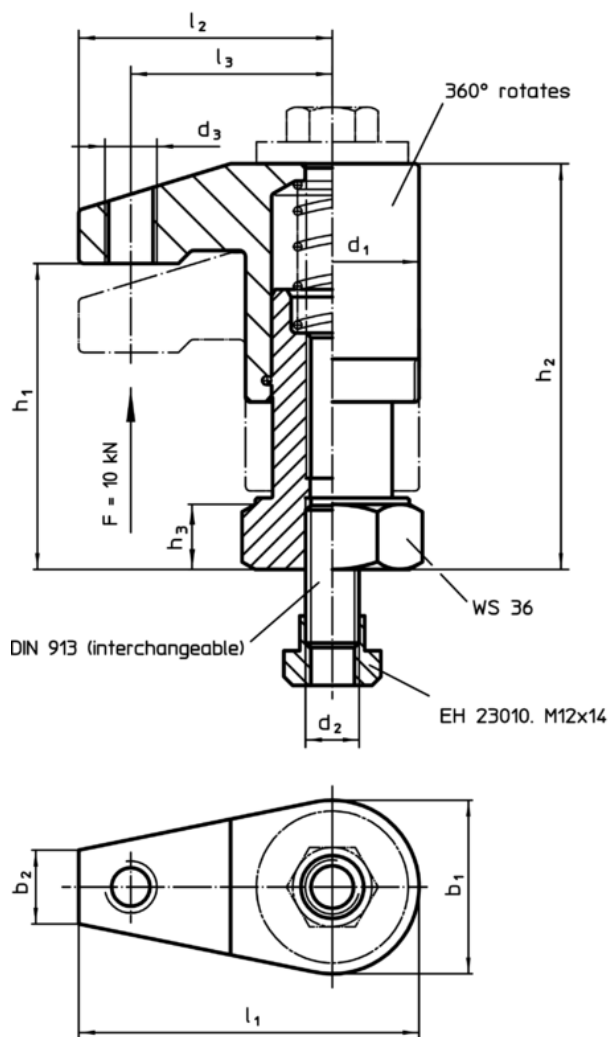
## References

The clamping height can be increased by using height adjusting cylinders EH 23310. and disks EH 1107. and EH 1108. It can be reduced by employing clamping inserts, e.g. EH 22730.

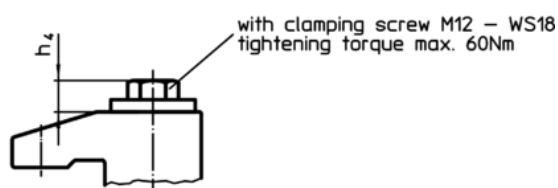
## Further products

- Positioning Rings, for down-thrust clamp
- Height Adjusting Cylinders
- Spacers
- Wrenches

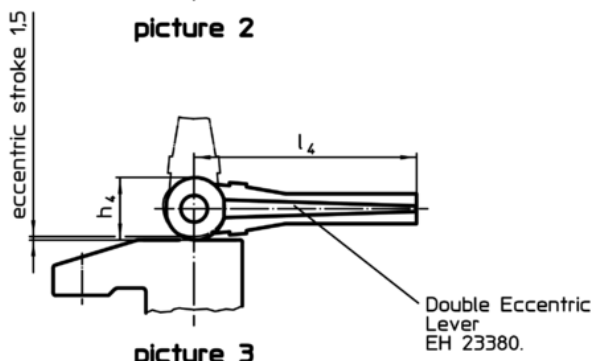
Drawing



picture 1



picture 2



picture 3

Order information

Dimensions														Stroke	RoHS	REACH	Art. No.
d <sub>1</sub>	b <sub>1</sub>	b <sub>2</sub>	d <sub>2</sub>	d <sub>3</sub>	h <sub>1</sub>	h <sub>2</sub>	h <sub>3</sub>	h <sub>4</sub>	l <sub>1</sub>	l <sub>2</sub>	l <sub>3</sub>	l <sub>4</sub>	Stroke	RoHS	REACH	Art. No.	
[mm]														[mm]	[g]		
with adjustable clamping lever with axial bearing – picture 1																	
40	40	17	M12	M12	68 – 98	91 – 121	15	82	75	55	43	108	30	1359	RoHS-compliant	contains SVHC materials >0.1% w/w	23310.0053

